

Jones County Journeys
April - May - June 2018



Volume 24 – Number 4

Jones County Genealogical and Historical Organization, Inc.

P. O. Box 2644

Laurel, MS 39442-2644



Jones County Journeys

A Quarterly Publication of the Jones County Genealogical and Historical Organization, Inc.

Future Meeting Dates

July 28, 2018

August 25, 2018

September 22, 2018

October 27, 2018

Please Make Note Of The Meeting Dates.
I May Not Always Be Able To Send Out A
Notice By Email To You.

MARK YOUR CALENDAR

**ALL MEETINGS ARE HELD ON THE FOURTH
SATURDAY OF EACH MONTH, WITH THE
EXCEPTION OF THE NOVEMBER MEETING,
WHICH IS HELD ON THE SECOND SATURDAY.
THERE IS NO MEETING DURING THE MONTH OF
DECEMBER.**

**DON'T FORGET - - WE STILL HAVE VOLUMES 1, 2, & 3 OF THE ECHOES FROM OUR PAST BOOKS AS WELL
AS 2015, 2016, 2017 & 2018 HISTORICAL CALENDARS FOR SALE. ORDER FORM CAN BE FOUND ON THE
LAST PAGE OF THE NEWSLETTER.**

Table of Contents

Page 3	Courthouse Talk
Page 4	New Building – Laurel Depot – C. H. Warren – Elliville & KOLA Railroad
Page 5	J. L. Gough – Contractor's Notice – New Masonite Clinic – New Saw Mill
Page 6	Minutes
Page 7	Minutes
Page 8	Membership Form
Page 9	Order Form

CHECK YOUR MAILING LABEL FOR YOUR EXPIRATION DATE.

PLEASE USE THE MEMBERSHIP FORM FOUND ON THE LAST PAGE OF THIS NEWSLETTER AND SEND IT ALONG WITH
YOUR DUES PAYMENT OF \$12 TO THE ADDRESS LISTED ON THE FORM.

Please go to our website, <http://www.jonescogenealogy.org>

and check out all the work JCGHO member

Jennifer Leigh Echman is putting into it. More items will be added each month!

JCGHO Officers

President	Carolyn Horne	601-763-9241	horne@bayspringstel.net
Vice President			
Secretary	Keith Horne	601-763-9241	horne@bayspringstel.net
Treasurer/ Newsletter Editor	Susan Blakeney	601-433-6255	sblakeney1@yahoo.com

MORE COURTHOUSE TALK

Little Webster County Divided ---Smaller In Every Particular Than Jones --- Two Courthouses Located Within Six Miles --- Statistic Given.

TWO DISTRICTS ESSENTIAL TO JONES CO.

Unquestionable Reasons Given - - - The Best Interests of the Second District People Demanded It - - - Voters Again Urged To Go to the Polls On April 17 and Vote on This Most Vital Question.

Since our last issue Webster county containing only 409 square miles has been divided by the legislature into two court districts with a court house at Walthall and one at Eupora, within six miles of each other.

The bill has passed both houses, and submits the question to the voters of the new district only, and the bill is exactly like the Jones county bill.

Get your map and look at Webster county, it had about 13,000 population in 1890, Jones county had 17,800, Webster has 409 square miles and Jones had 674. We haven't the assessed value of each county at hand but we are confident Webster's total will not reach one and a half million. The town of Walthall has a population of 200 and Eupora has 800. Has not the Legislature the right to divide counties into two court districts, if the necessity exists? If two court districts are necessary in Webster, why are not two districts necessary in Jones? Do not be misled by statements that never before in the history of Mississippi have counties been divided as Jones had done. Look at Bolivar, Tallahatchie, Choctaw, Jasper, Webster and Harrison counties, some of them were divided without submitting the question to people at all, Jones, however, submits the question to those who live in the new district-anything unfair about that? If Sandersville wants to build a school house, what have the people ten or fifteen miles off got to do with it? Sandersville is incorporated, has an imaginary line around the town called her corporate line. So the people of the second district have gotten the Legislature to permit them to draw an imaginary line across the

county from east to west between Ellisville and Laurel to be called the dividing line between the first district, Ellisville and the new or second district, Laurel, and in this second district they propose to build a courthouse, jail, etc. Now in fairness, what have the people outside this line to do with it? Ah' But you say a lot of people outside of the new district own property in the new district. So do people living outside of Sandersville own property in Sandersville. So do people living in Michigan, New York, Illinois, Iowa and other states own property in Jones county, do we consult them every time we want any public improvement? If we did we would never make any public improvements, and our progress would be slow indeed, the idea is absurd. We propose, however, to leave this question of a division of Jones county to the people who live in the new district. The assessed valuation of all the property in the Laurel district is about four million dollars. Say the board of supervisors should decide to issue eight thousand dollars of bonds for the new court house, jail, etc., the bonds to run for twenty years, four thousand dollars of the principle payable each year, the bonds to draw 5 per cent interest making approximately eight thousand dollars per year to be paid for 20 years.

Now then if you are assessed with \$100 for one year, only the small sum of twenty cents per year will be added to your assessment, in other words, the increase to the tax-payer of the new district will only be twenty cents per hundred dollars, per year on a hundred dollar assessment or an increase of \$2 per year for a thousand dollar assessment.

Say your assessment for 1906 is \$100 and the board fixes the levy for 1906 at 13 mills you would then be due \$1.30 taxes for 1906, to this add the increase of 20 cents, above mentioned, you would only own \$1.50, so if your tax was \$13 the increase would make it \$15, if your assessment was \$1000.

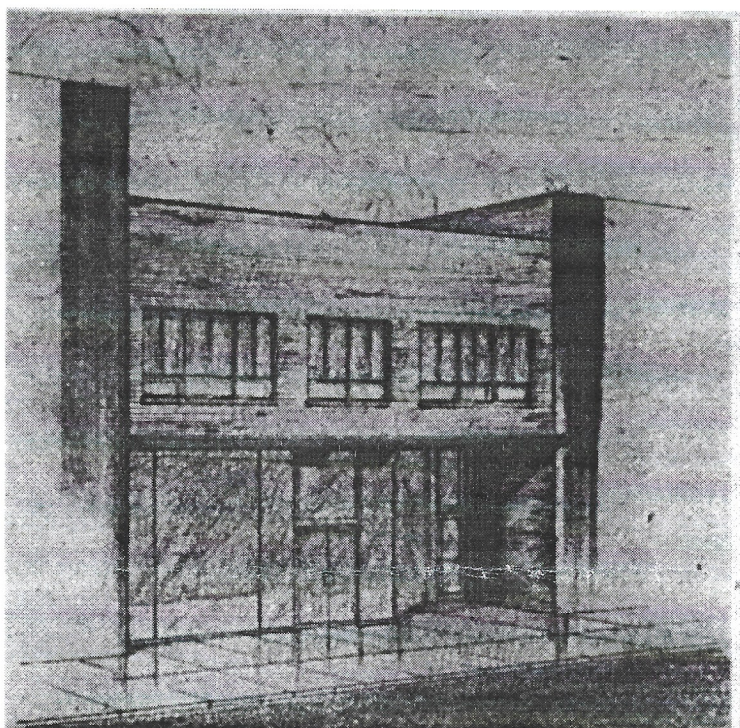
But the court house bill says the board shall expend not less than \$25,000, nor more than \$80,000 for court house, jail, etc., at Laurel - so the cost of

court house, jail, etc., is purely in the discretion of the board as between the minimum and maximum – of course if the board should expend only \$25,000 your increase would only be about 7 cents per year per \$100. Look up the assessed valuation of the property in the second district and make your own calculations.

***Source: *The Laurel Ledger*, Laurel, Mississippi.

Saturday, 31 March 1906, page 1.

New Business Building



Construction is underway on the modern two-story building at 539 Central avenue, owned jointly by A. U. Smith and Claude Bennett, which will house the Easy Pay Tire Store and six offices of completion shortly after the first of next year.

The foundation has been poured and the steel superstructure is going up on the vacant lot in the heavy business are of Central Avenue. The striking two-story building was designed by Pearson-Walker. Walter Tillery is the contractor.

A solid glass front, 12 feet high and 37 ½ feet wide, will be the exterior of the Easy Pay Tire Store on the first floor. Display and sales room will occupy about 1500 square feet finished with Masterplace concrete flooring, and the stock and service room in the rear will have 11000 square feet. There will be, in addition, a concrete service court of 750 square feet in

the back of the alley for the convenience of the patrons.

Floursecent lights will be used in the building. A metal canopy will extend over the sidewalk.

The Easy Pay Tire Store will carry a complete line of appliances in addition to Goodyear tire, batteries, and home supplies, according to Manager A. U. Smith. The store has been located at 525 Central Avenue since April 1, 1944.

The second story of the building will be occupied by six as yet unselected offices. There will be a lobby entrance on the east side of the street level leading to the offices. Each Office will be air conditioned and contain a recopetion room. Exterior of the second floor will be buff-colored Malvern brick.

***Source: *The Laurel Leader-Call*, Laurel Mississippi, Wednesday, November 17, 1948, page 6.

The Laurel Depot

The railroad commission is pushing the union depot for Laurel and with the proper cooperation from our citizens something might come of it.

A few side complaints are being worked into the situation which may help, but the need of a sanitary place for the public to assemble is sufficient argument against the Northeastern.

C. H. Warren, a properous farmer of near Service, has sold out and is moving this week to Jasper county, just west of Bay Springs. He was born in Jones and has lived here up to this change. He will make a valuable addition to Bay Springs.

ELLISVILLE AND KOLA RAILROAD

With an immense steel bridge already completed across Leaf river, it would appear that the projected railroad from Elliville to Kola is no longer a "road on paper," but is fast assuming an actual and tangible appearance.

The road already runs out eight miles from Ellisville in the direction of Kola and the steel bridge for the road across Leaf river has been completd and the

balance of the construction work is to go rapidly forward.

The new mill at Kola, buld by Mr. Mulford **Parker**, wo is alos building the railroad, began business last week. – Hattiesburg News

****Source:** *The Laurel Ledger*, Laurel, Jones County, Miss., Thursday, December 31, 1908, page 1.

J. L. GOUGH DEAD.

Mr. J. L. Gough, a well known and highly esteemed citizen of Ellisville, died suddenly at the home of his brother, Mr. H. P. Gough, on Thursday evening of last week.

The funeral took place from the Baptist Church, of which deceased was a member, at 3:30 o'clock Friday afternoon, and a large concourse of sorrowing relatives and friends followed the remains to the City Cemetery, where they were laid to rest.

Mr. Gough had been a resident of this community for many years and was well and favorably known throughout this territory. The News extends sincerest sympathy to the sorrowing relatives and friends.

****Source:** *The Jones County News*, Thursday, August 4, 1910, page 5.

Notice To Contractors.

Notice for bids for the erection of fence around the Court house at Laurel and Ellisville:

Sealed bids are requested and will be received by the Chancery Clerk up to 12 o'clock M. at Laurel, Mississippi on the 1st Monday and 5th day of June 1911, for the erection of a fence around the Court house at Laurel and also around the Court house at Ellisville as per the apecifications now on file in the Chancery Clerk's office in the First and Second Districts of Jones County, Mississippi.

Each bidder shall file with his bid a detailed drawing of the kind of fence he proposes to build and to enter into bond in the amount of his bid with approved security for the faithful performance of his

duty. The Board reserves the right to reject all and any bids.

By order of the Board of Supervisors of said County, May 1st, 1911.

J. H. Crawford, Clerk

By Henry Huff, D. C.

****Source:** *The Jones County News*, Ellisville, Miss., Thursday, May 4, 1911, page 5.

NEW MASONITE CLINIC WILL BE LOCATED BETWEEN ELLISVILLE BOULEVARD AND SOU. MAGNOLIA

A warranty deed transferring title from Mississippi Investments, Inc., to the Masonite Corportaion of a parcel of land 100 feet from north to south, extending from the western boundary of Ellisville Boulevard to the eastern boundary of South Magnolia street, the nothern boundary being a line parallel to and 1856 feet south of Central avenue, has been recorded in the chancery clerk's office in Laurel. This is the be the site of the new Masonite clinic to be built in the near future, near the Boulevard playground.

****Source:** *The Leader-Call*, Thursday, September 26, 1940, page 6.

NEW SAW MILL IN JONES COUNTY

Reynolds & Evans to Establish One at Gitano

Messrs. W. M. Reynolds and R. A. Ellis of Hattiesburg, experienced saw mill men, under the firm name of Reynolds & Ellis, who for some time past have had under consideration the establishment of a saw mill plant in Jones County, were somewhat delayed in the consumation of their plan in the acquirment of the timber lands necessary to the operation of a mill.

Yesterday Mr. Reynolds was in Laurel and he annouced that deals had been made for timber lands which will cut 12,000,000 or 13,000,000 feet. Consequently their mill will be operated at the earliest possible date, probably within the next thirty days. The lands obtained lie in Jones, Smith and Jasper Counties.

Their mill, having a daily capacity of 20,000 to 30,000 feet daily, is now on the ground and the work of placing it will begin immediately. The mill is to be

located at Gitano, on the Gulf & Ship Island railroad, in Jones County, fourteen miles from Laurel.

****Source: *The Laurel Ledger (Laurel Mississippi)*, Thursday, September 30, 1909, page 1.**

MINUTES

MARCH 24, 2018

The JCGHO met on Saturday, March 24, 2018 in the upstairs meeting room at the Laurel-Jones County Library.

President Carolyn Horne called the meeting to order with 19 in attendance.

Charles Robine gave the opening prayer and led the group in the Pledge of Allegiance.

Everyone was welcomed and reminded to sign the register and invited to become a member.

Jennifer Eckman gave an interesting and very informative program on DNA. She talked about the Ancestry DNA testing and she touched on four points of DNA: Ethnicity, DNA Discovery, DNA Circles, and DNA Masters.

Jennifer also offered to help anyone that needed help with their DNA testing and she gave her email address.

A short break was taken to enjoy refreshments provided by JCGHO.

The business portion began with a plea for a Secretary. The group was reminded that there are calendars and family history books for sale.

President Horne read the minutes of the last meeting and there was a motion to accept the minutes as read, the motion was seconded and all were in favor.

Betty Morad reported that there was no change in the Marriage Records project.

Jean Holifield reported that we have plenty of all three volumes of the Family History books and we need to work on selling them.

The subject of the Annual Calendar Project was brought up for final decision. Susan Blakeney, Calendar Chairman, gave a brief report and the bottom line was that it is too much work and time spent for what little profit we make. Steve Guy made the motion to discontinue the Annual Calendar Project, the motion was seconded by Keith Horne and all were in favor.

Charles Robine read a detailed description of Treasurer Susan Blakeney's duties that she performs mostly on a monthly basis and suggested that she should be compensated for this work. A motion was made to pay Susan \$100.00 per month. There was discussion, the motion was seconded and passed.

There being no further business a motion was made to adjourn, seconded and all were in favor.

Respectfully submitted,
Carolyn Horne, President
In absence of a Secretary

APRIL 28, 2018

The JCGHO met on Saturday, April 28, 2018 in the upstairs meeting room at the Laurel-Jones County Library.

President Carolyn Horne called the meeting to order with 46 in attendance.

Charles Robine gave the invocation and led the group in the Pledge of Allegiance.

Carolyn welcomed guests and invited them to join if they were not members. Everyone was reminded to sign the register, dues could be paid and that there are calendars and *Echoes From our Past* available to purchase.

The speaker Dr. Alice Marie Rahaim Laurendine related interesting stories about her family and foods that they liked and she shared some of the family recipes. At the end of her presentation, Alice Marie gave one of her books entitled *Bits and Bytes* to JCGHO, which will be available in the genealogy library.

A break was taken to enjoy the beautiful table of refreshments that was provided by Charlotte Saik.

In the business meeting a motion was made to elect Keith Horne as Secretary. The motion was seconded and all were in favor.

Carolyn Horne read the minutes of the March meeting and they were approved as read.

Jean Holifield reported that we need to work on selling the family history books. Also, Jean agreed to be the Publicity Chairman for JCGHO.

At the last meeting there was some discussion on how some things were done and it was decided this would be addressed at the Board of Directors meeting.

There was also some discussion about the use of the library equipment. The President and the Vice-president will meet with Ms. Breland, the Library Director, to discuss the Library Policy.

Also, a question was raised about reimbursing for the cost of the refreshments. This too will be discussed at the Board of Directors meeting.

There being no announcements or further business, the meeting was adjourned.

Respectfully submitted,
Keith Horne, Secretary

Meeting Held with Director of the Laurel-Jones County Library System, Inc., Mary Louise Breland

A meeting was held on May 3, 2018 with the director of the library, Mary Louise Breland. In this meeting, a discussion of the library policy on use of the equipment owned by the library was held. All equipment that is located in the auditorium of the library belongs to the Laurel-Jones County Library System. This equipment is available for use by individuals, or groups, for their meetings. There is a rental fee associated with the equipment. And per Ms. Breland, the JCGHO does not pay this rental fee as long as Susan Blakeney, genealogist for the Laurel-Jones County Library System is on duty. Susan is to be responsible for the running of the equipment.

Ms. Breland stated the equipment is not allowed to leave the library for any purpose, and she went on to state if the individual or group wanted to bring their own equipment, that was allowed.

The equipment we were discussing at this meeting is the audio/visual equipment the library recently purchased. There is a 90-inch television screen, an overhead projector and a projection screen.

Executive Board Meeting

May 5, 2018

An Executive Board Meeting was held on Saturday, May 5, 2018 at the Laurel-Jones County Library in the Genealogy Library.

Those present were as follows: Carolyn Horne, President; Steve Guy, Vice-President; Susan Blakeney, Treasurer/Newsletter Editor; Keith Horne, Secretary; Jean Holifield, Past President and Charles Robine.

There were questions and discussion with not many answers and not much was accomplished. One item that was brought up was the motion made by

Charles Robine in the March 24, 2018 meeting to pay Susan Blakeney \$100.00 per month. This brought up much conversation and concern. Secretary Horne asked Mr. Robine if he would like to rescind his motion, and Mr. Robine said "Due to the circumstances, yes."

Treasurer Blakeney stated, "I have two options in this matter, I can resign my positions in the JCGHO, or I can refuse the money. Due to the conversations held here today, I refuse the money."

Because of the way the meeting was going, and seeing that nothing was being accomplished, our Vice-President, Steve Guy, resigned his position.

There being no more business discussed, Secretary Horne made the motion to adjourn the meeting.

If you as a member of the JCGHO would like to know more of what happened in the Executive Board meeting, please contact President Carolyn Horne. Her contact information is listed on the second page of this newsletter.

Genealogy Puzzle

WORD LIST

- ☐ Census
- ☐ Birth Certificate
- ☐ Obituary
- ☐ Cemetery
- ☐ Marriage license
- ☐ Deed
- ☐ Will
- ☐ Family bible
- ☐ Military papers
- ☐ Old letters
- ☐ Citizenship papers
- ☐ City directory

S E M R Y M Y C E Y B I R L A H
R A A D C M R I S R Y T D S S L
E C L F B B O I N R C R T A I R
P O L D L E T T E R S L S Y A I
A B P A P L C T C E W U Y L F I
P I C M R L E A I I S M R S A Y
P T L D S M R Z L N C P L A M S
I U D E E D I L E A R U M E I I
H A T C R M D C G B E P C R L R
S R E P A P Y R A T I L I M Y E
N Y S T L S T R I D T S L L B N
E T A C I F I T R E C H T R I B
Z F S M P P C M R I S R Z A B T
I B F P S S A O A B E E P O L R
T C O I E U T S M A R I P L E E
I T A R I S T L P E L I F E E H
C M E I E S L I I T A N E A A E

*****DO YOU HAVE A QUESTION ABOUT THE JCGHO?
DO YOU NEED ASSISTANCE WITH YOUR GENEALOGY
RESEARCH? CONTACT ME AT THE EMAIL LISTED ON
THE CONTENT PAGE OF THIS NEWSLETTER*****



Jones County Genealogical and Historical Organization

Membership Form

"Dedicated To Historical Preservation"

PLEASE RETURN TO JCGHO P.O. BOX 2644 LAUREL, MS 39442-2644, OR LEAVE IN THE GENEALOGY DEPARTMENT OF THE LAUREL – JONES COUNTY LIBRARY, ALONG WITH YOUR YEARLY

DUES OF \$12.00. THIS COVERS YOUR SPOUSE AND HOUSEHOLD. DUES INCLUDE THE NEWSLETTER, JONES COUNTY JOURNEYS, WHICH IS A QUARTERLY PUBLICATION. ALL QUERIES, SUGGESTIONS AND IDEAS ARE WELCOMED AND APPRECIATED.

PLEASE PRINT

____ New Member ____ Prior Member \$ ____ Amount Paid ____ Date

Name _____ Phone Number _____

Address _____

Name of Spouse _____ E-Mail Address _____

Researching Surnames Of _____

Particular areas of interest: ____ Genealogy ____ Historical

As usual, we are always looking for volunteers to serve on the various committees of the organization. If you would like to volunteer for a committee, please check here ____.

WE APPRECIATE YOUR SUPPORT

Find us on the web at <http://jonescogenealogy.org/>





Jones County Genealogical and Historical Organization

P. O. Box 2644

Laurel, MS 39443-2644

Established August 1995

E-Mail: jcgho1@yahoo.com

Laurel-Jones County Library Genealogy

Telephone: 601-428-4313, ext 111

Laurel-Jones County Library Genealogy

Department Hours: Thursday 1-4:45

Books and calendars are available for purchase from the Genealogy Department of the Laurel-Jones County Library during the hours mentioned above. You may also purchase a

book from Jean H. Holifield by contacting her at 601-518-7708.

Orders for the publications will be accepted by mail with an accompanying check in the appropriate amount. Please fill out the bottom section of this page and mail it with your check or money order made out to JCGHO to:

JCGHO

P. O. Box 2644

Laurel, MS 39442-2644

_____ Volume One, Jones County Mississippi, Echoes From Our Past	\$50.00 plus \$5.00 S/H	\$_____
_____ Volume Two, Jones County Mississippi, Echoes From Our Past	\$40.00 plus \$5.00 S/H	\$_____
_____ Volume Three, Jones County Mississippi, Echoes From Our Past	\$40.00 plus \$5.00 S/H	\$_____
_____ 2015 JCGHO Historical Calendar	\$ 1.00 plus \$2.00 S/H	\$_____
_____ 2016 JCGHO Historical Calendar	\$ 1.00 plus \$2.00 S/H	\$_____
_____ 2017 JCGHO Historical Calendar	\$ 2.00 plus \$2.00 S/H	\$_____
_____ 2018 JCGHO Historical Calendar	\$ 5.00 plus \$2.00 S/H	\$_____

Total Enclosed \$_____

Name: _____

Address: _____

Telephone: _____ E-Mail: _____

Any special request: _____

Please use contact information listed above or call Susan Blakeney, 601-433-6255 or Carolyn Horne, 601-422-3099

"Dedicated To Historical Preservation"

WE APPRECIATE YOUR SUPPORT

<http://jonescogenealogy.org/library.php>

